

Cherokee Nation Breast and Cervical Cancer Early Detection Program



ᏍᏍᏍᏍ ᏍᏍᏍᏍ
CHEROKEE NATION®
Community, Jobs, Language

Objectives

- Overview Cherokee Nation Health
- Program background
- Eligibility Requirements
- Services provided
- Reimbursable services



Cherokee Nation Health Services

14 County Jurisdictional Boundaries



Legend

- Cherokee Nation Clinic
- IHS Hospital
- Main Complex



G W Y . D B F
CHEROKEE NATION®
Community, Jobs, Language

Background

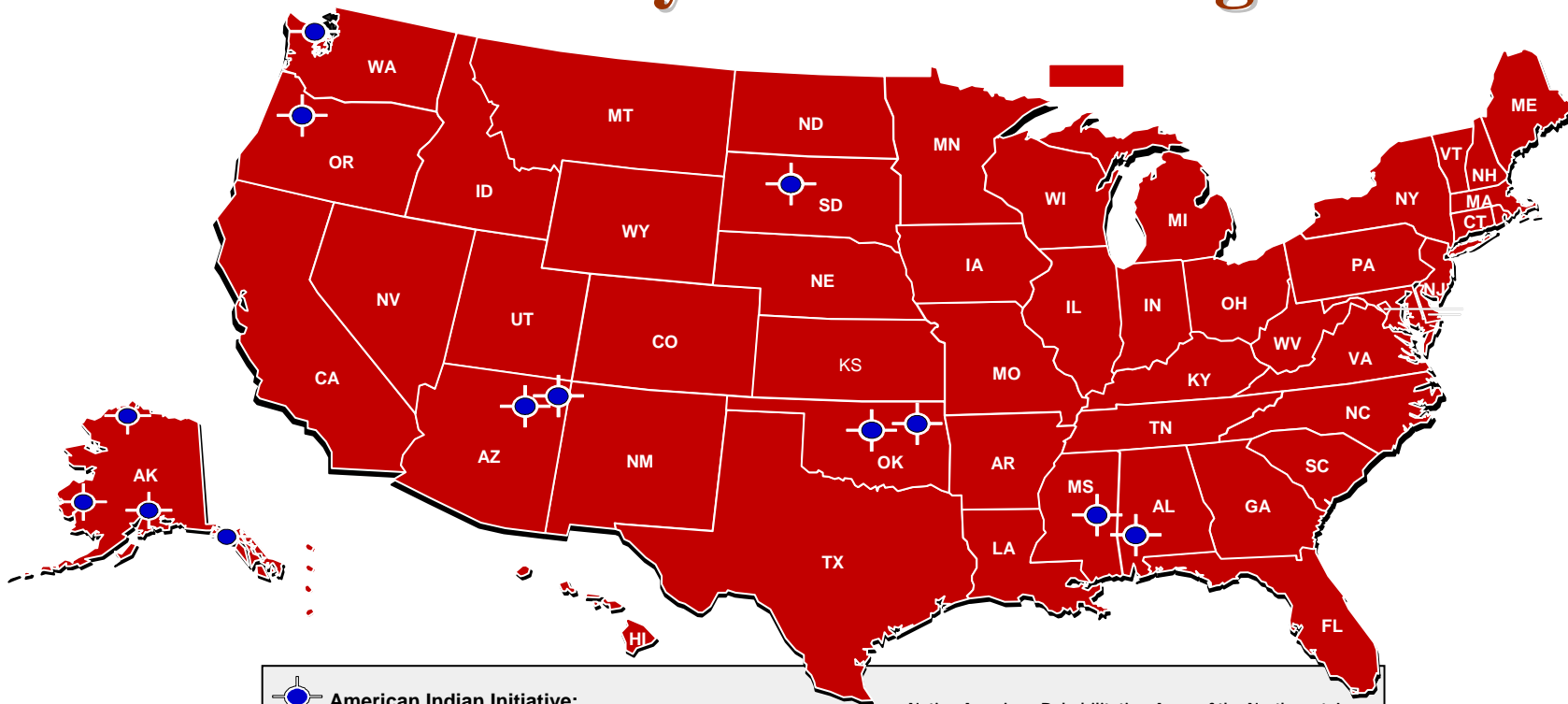
The Breast and Cervical Cancer Mortality Prevention Act of 1990: *Public Law 101-354*

- Authorized the National Breast and Cervical Cancer Early Detection Program (NBCCEDP).
- Act amended, 1993, referred to as the NBCCEDP American Indian/Alaska Native Initiative.
 - ✓ Designed to address growing concerns about cancer in Native communities and evidence of detection at late stages.



ᏍᏍᏍ ᏍᏍᏍ
CHEROKEE NATION®
Community, Jobs, Language

The National Breast and Cervical Cancer Early Detection Program



American Indian Initiative:

Arctic Slope Native Assn, Ltd – North Slope Borough, Barrow, AK
 Cherokee Nation – Tahlequah, OK
 Cheyenne River Sioux Tribe – Eagle Butte, SD
 Hopi Tribe – Kykotsmovi, AZ
 Kaw Nation – Kaw City, OK
 Mississippi Band of Choctaw – Philadelphia, MS

Native American Rehabilitation Assn of the Northwest, Inc
 Navajo Nation – Window Rock, AZ
 Poarch Band of Creek Indians – Atmore, AL
 South Puget Intertribal Planning Agency – Shelton, WA
 Southcentral Foundation – Anchorage, AK
 Southeast Alaska Regional Health Consortium – Sitka, AK
 Yukon-Kuskokwim Health Corp – Bethel, AK



G.W.Y. DBF
CHEROKEE NATION®
 Community, Jobs, Language

Background

- 1996- CNBCCEDP began paying for breast & cervical cancer screening services for Native American women
 - ✓ 2 case managers operating “off site” or centrally
- 2002- Case Management “on site” or decentralized
 - ✓ 8 case managers total, 7 located in the clinic setting
 - ✓ Health Educator/Data Specialist/Billing remain centralized



Eligibility Guidelines

- Enrollment Criteria:
 - ✓ Native American (federally recognized tribe)
 - ✓ 40 years or older
 - ✓ No 3rd party coverage
 - ✓ At or Below 250% Federal Poverty Level (FPL)
 - ✓ No residency requirements



GWY.Ꭰ DBF
CHEROKEE NATION©
Community, Jobs, Language

Services Covered

- **Screening** tests:
 - Screening Mammogram
 - Clinical Breast Exam
 - Pap test
- **Diagnostic** tests (*if patient is non-OK resident*):
 - Diagnostic Mammogram/Focal Spot Compression
 - Breast Ultrasound
 - Biopsy of breast; needle core
 - Aspiration of Cyst of Breast
 - Incisional biopsy of breast
 - Excisional biopsy of breast
 - Fine Needle Aspiration
 - Colposcopy with or without biopsy
 - ECC



Services Based on Eligibility

- Eligible
 - ✓ Receive clinic services
 - ✓ Enrolled in BCCEDP
 - ✓ Services paid by for BCCEDP \$\$\$
 - ✓ Health Education by Health Educator or Case Manager
 - ✓ Care case managed by case manager
- In-Eligible
 - ✓ Receive clinic services
 - ✓ **NOT** enrolled in BCCEDP
 - ✓ Services paid by for **CN Health or a 3rd party source.**
 - ✓ Health Education by Health Educator or Case Manager
 - ✓ Care case managed by case manager



Health Education/Outreach

- Clinic Setting
 - ✓ One-on-One
- Health Fairs
 - ✓ Employee Health Fair
 - ✓ Briggs School Health Fair
- Churches
- Community Events
 - ✓ Cherokee Holiday
 - ✓ Breast and Cervical Awareness Month
 - ✓ National Women's Health Week



BCCEDP Data

- CaST (**C**ancer **S**urveillanc**e** and **T**racking)
 - ✓ Demographic/Screening/Diagnostic
 - ✓ Case Management Support
 - Data monitored for accuracy and completeness
 - Queried for outstanding clinical results



BCCEDP Data

- Billing Support
 - ✓ Verification of eligibility and service delivery
 - ✓ Query for unpaid eligible BCCEDP services
- Data Review
 - ✓ Bi-Annual Data Submission
 - ✓ Performance-Based Funding

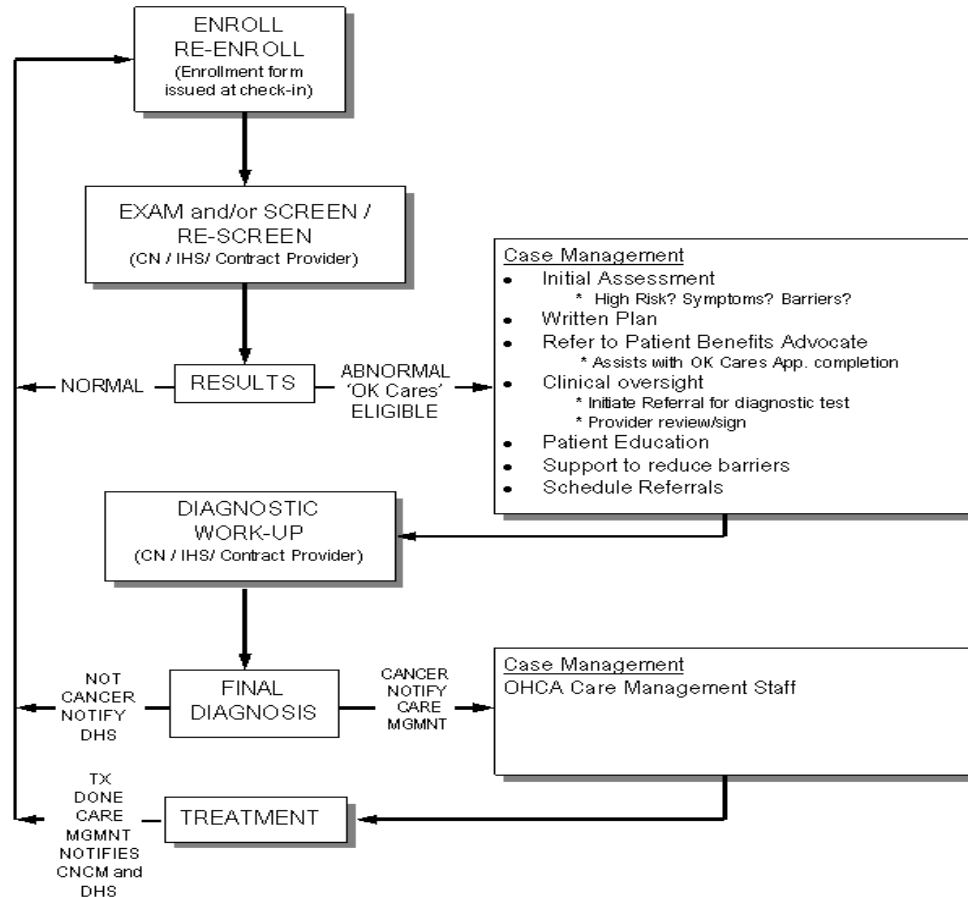


Billing- CN Clinics

- Process
 - ✓ Bill generated
 - ✓ Forwarded to CN Health Billing
 - ✓ Bills (HCFA) received by our program
 - ✓ Services verified
 - ✓ Invoice prepared
 - ✓ Payment processed internally



Case Management



Oklahoma Cares- Breast & Cervical Cancer Treatment Act

- Oklahoma Cares- Breast & Cervical Cancer Treatment Act
 - ✓ Implemented January 1, 2005
- Five Agencies
 - ✓ Cherokee Nation
 - ✓ Kaw Nation
 - ✓ Oklahoma State Department of Health
 - ✓ Oklahoma Health Care Authority (Medicaid Agency)
 - ✓ Oklahoma Department of Human Services
- Interagency Agreement signed by all five agencies.
- Continued inter-agency collaboration



GWY.Ꭰ DBF
CHEROKEE NATION®
Community, Jobs, Language

Challenges

- Missed patient appointments
- Limited clerical support
- Limited Colposcopy Services
- Other clinic demands
 - ✓ Committees
 - ✓ Outreach



Challenges

- Limited Pathology Services-Contract
- Limited Surgery Therapy-IHS
- NO Oncology Services-Contract
 - ✓ Radiation
 - ✓ Chemotherapy



Contact Information

- Angela Leach, RN, Program Manager- BCCEDP
(918) 453-5756
angela-leach@cherokee.org



ᏍᏍᏍ ᏍᏍᏍ
CHEROKEE NATION®
Community, Jobs, Language